

Name: _____ Date: _____

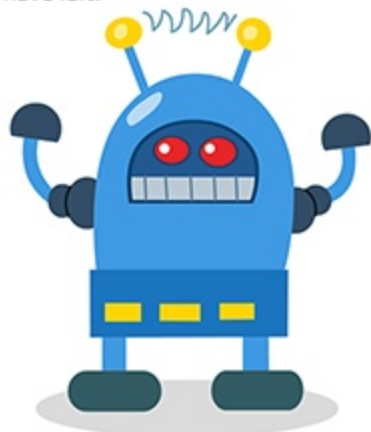
Teacher/Period: _____ Final Grade: _____ / 100

Add and Subtract Within 1000

Question 1 (Short Answer)

_____ / 10

If a robot has 350 gears and it loses 150, how many gears does it have left?

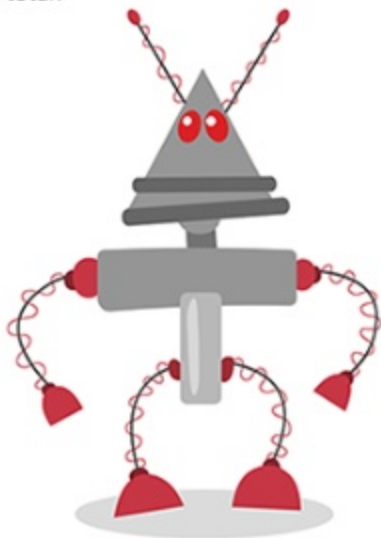


Answer: _____

Question 2 (Short Answer)

_____ / 10

A robot has 100 circuits. It gains an additional 200 circuits. How many circuits does the robot have in total?

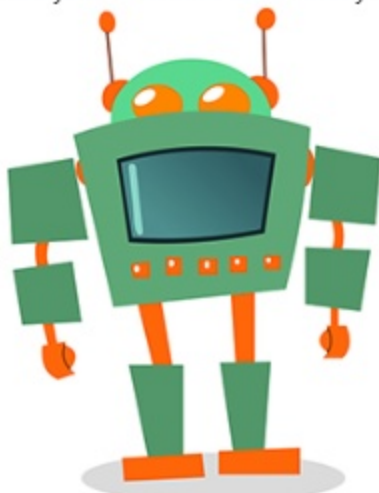


Answer: _____

Question 3 (Short Answer)

_____ / 10

A factory produces 600 robots. 300 of them are sent to a store. How many robots are left in the factory?



Answer: _____

Question 4 (Short Answer)

_____ / 10

A robot can carry 333 packages. If it already has 111 packages, how many more packages can it carry?
Answer: _____

Question 5 (Short Answer)

_____ / 10

Robot A has 456 parts while Robot B has 224 parts. How many parts do they have in total?
Answer: _____

Question 6 (Short Answer)

_____ / 10

If a robot uses 276 batteries and you have 500 batteries, how many batteries will you have left after the robot uses them?

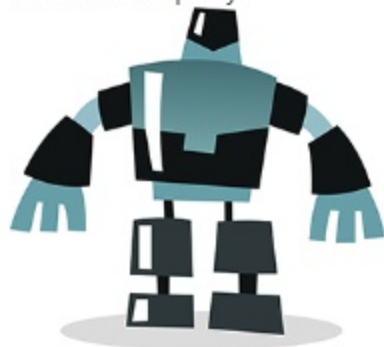


Answer:

Question 7 (Short Answer)

_____ / 10

A robot factory can make 550 robots per day. If it made 300 robots yesterday, how many more robots can it make today to reach its maximum capacity?



Answer:

Question 8 (Short Answer)

_____ / 10

A robot contains 564 gears. If 300 gears get damaged, how many gears are left in it?

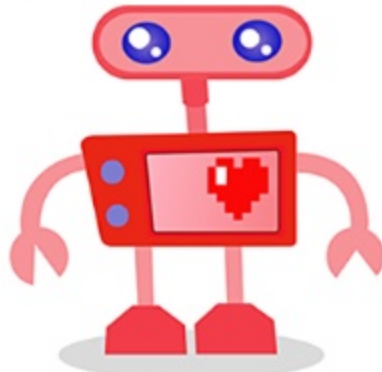


Answer:

Question 9 (Short Answer)

_____ / 10

A robot was carrying 789 bolts when it lost 290. How many bolts does the robot still have?



Answer:

Question 10 (Short Answer)

_____ / 10

If a robot has 345 bolts and another robot has 348 bolts, how many bolts are there in total?

Answer:

Answer Key for Add and Subtract Within 1000

1: 200

2: 300

3: 300

4: 222

5: 680

6: 224

7: 250

8: 264

9: 499

10: 693